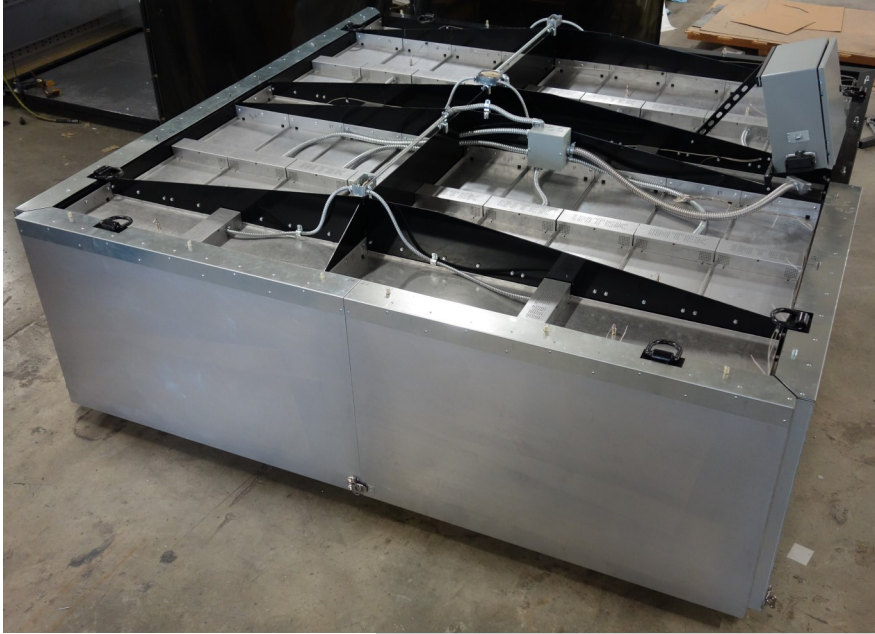


# THERMOFORMING APPLICATIONS USING ELECTRIC INFRARED HEAT



INTEK's OM and C-model Flat-Panel Electric Infrared Emitters have proven to be the perfect solution where efficient and effective process heating is needed for softening, curing, molding, pre-heating or thermosetting various materials. INTEK has been called upon in a variety of applications to design and create specialized process heating solutions using their longwave infrared emitters for customers across the thermoforming industry. The American-made OM-model and C-model heaters offer modularity and flexibility for any installation that requires controllable and targeted radiant heat.

**(Above)**  
**10'x10' Infrared Heater Array**

- (24) OM-model IR Emitters
- Control & Distribution Panels
- Conduit & Wiring
- Insulated Side Curtains
- Structural Steel Frame

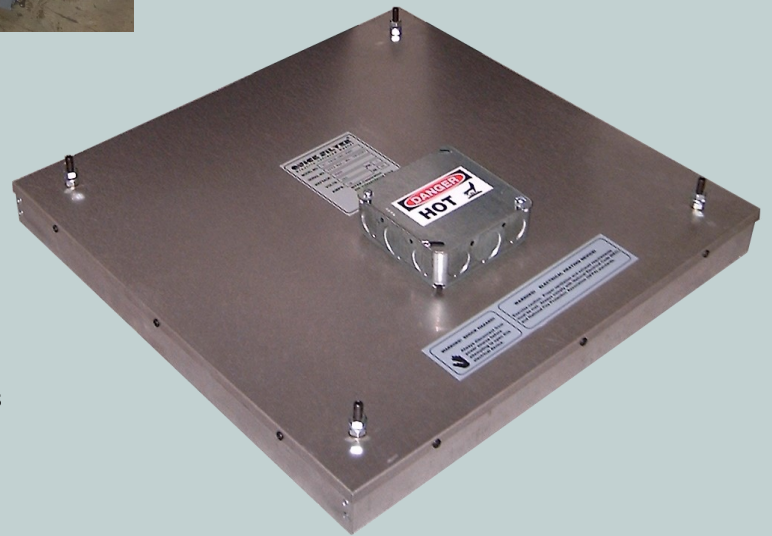
**Turn-Key Systems Built or Individual Components Sold**

- UL-Listed Control Panels Include:
- Built-In Safety Disconnect Switch
  - Digital Temp. Control
  - PLC/HMI Control Option Available
  - Solid-State Power Controllers
  - Circuit & Safety Protection

- INTEK Modular IR Heaters Include:
- 20ga Aluminized Steel Housing
  - Built-in Mounting Brackets / Studs
  - Integral Wire Raceway or J-box
  - High Temp Terminals for Long Life
  - Ceramic Insulation

**Benefits of INTEK Infrared Heaters:**

- Silent Operation
- No moving parts
- Fast Warm-up
- Uniform Face Temperatures
- Long Life
- No Maintenance



**HOT TUBS & SWIM SPAS**



**Case in Point**

INTEK was chosen by an industry-leading manufacturer of residential & commercial spas to create a heating array for a new swim spa product line. Utilizing a 22-zone layout to cover a 19-ft. x 9-ft. area, INTEK successfully engineered and fabricated a solution that gave excellent homogeneous thermal control across the entire surface of the infrared heater array to accurately and efficiently heat the tubs.