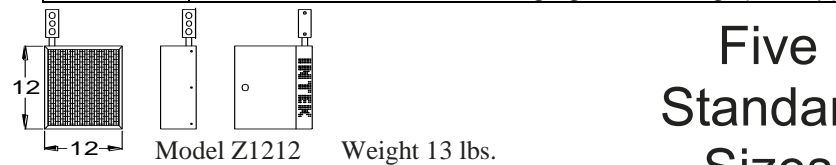


ZONALL SELECTION TABLE

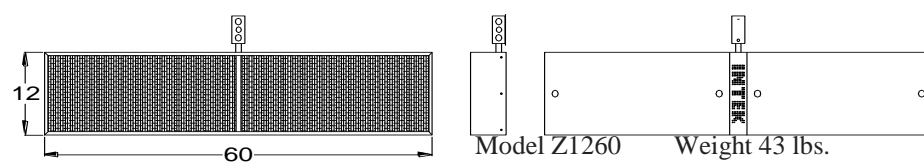
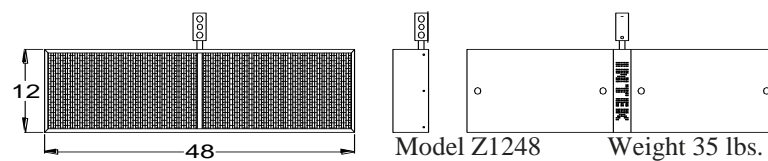
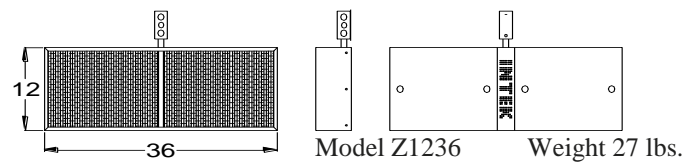
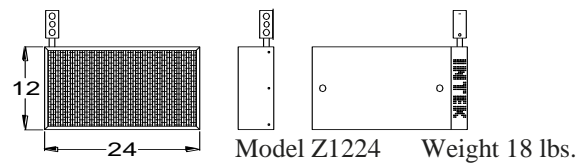
Model	Volts	Watts	Amps	Btu	Control Options
Z1212.120.1500	120	1500	13	5,118	LVT PLVT
Z1224.120.2000	120	2000	17	6,824	LVT CP-240
Z1224.240.3000	240	3000	13	10,236	LVT PLVT
Z1236.240.4500	240	4500	19	15,354	LVT CP-240
Z1236.480.4500	480	4500	10	15,354	LVT-480 CP-480
Z1248.240.6000	240	6000	25	20,472	LVT-480 CP-240
Z1248.480.6000	480	6000	13	20,472	LVT-480 CP-480
Z1260.240.7000	240	7000	30	23,884	CP-240
Z1260.480.7000	480	7000	15	23,884	LVT-480 CP-480

Model	Description
LVT	Line Voltage Thermostat – 120V~240V - 22 Amp max. load
P-LVT	Programmable Line Volt Thermostat – 120V~240V - 16 Amp
LVT-480	Line Voltage Thermostat – 24V~480V - 25 Amp max. load
CP-240	240V Control Panel (required when 25 Amp load is exceeded)
CP-480	480V Control Panel (120V transformer included)
WB	Wall brackets for mounting on wall or ceiling - sold as pair
CK	Chain kit for hanging from ceiling (5' drop)



Five Standard Sizes

All Units 5.5 Inches Deep



Providing you with your own little touch of Sun!



Warmth produced by Intek's **ZONALL** infrared heaters and the warmth produced by the Sun are very much alike. Infrared rays are not visible; they are just under visible light in the electromagnetic spectrum. The heat we feel on our planet is infrared heat produced by the Sun. Intek's **ZONALL** heaters direct infrared rays toward bodies and objects, safely warming like the sun on a warm summer day... without harmful UV rays.



Union, MO 63084 | 636.584.8500 | www.IntekCorp.com

ZONALL Electric Infrared Zone Heaters

Unique Industrial Design

- Various wattages for 120V, 240V or 480V operation
- Mount or hang at any angle in most locations
- Easy to install and wire - No ventilation required
- Quiet – No moving parts – Little or no maintenance required

Patented Flat Panel Emitter

- 100% efficient – no wasted energy
- Optimum 3.4 micron IR wavelength for best output
- Uniform output from entire heat panel surface area
- Up to 7000 watts per single heater

Application Management

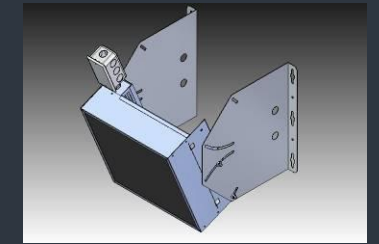
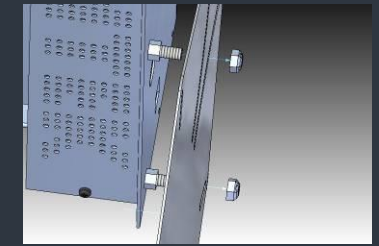
Radiant Infrared heating is an efficient and effective way to heat any space; large or small. Zoned heating refers to the process of heating individually controlled areas or 'zones' for the comfort of the individual. Targeting certain zones allows infrequently used surrounding areas to remain at lower temperatures. This approach provides comfortable work spaces where needed without the extra cost associated with unnecessarily heating an entire facility. Infrared is ideal for heating spaces large and small while reducing costs and improving comfort.

Product Testimony

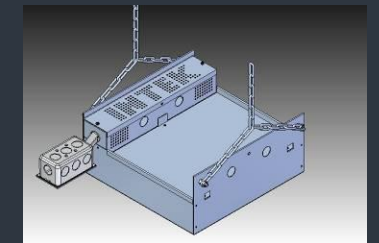
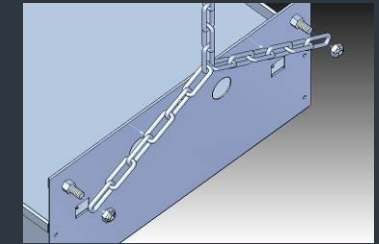
When JB Marine CFO, Mr. Dave Heyl (left) went shopping for a heating system for their new 5,000 sq. ft. machine shop, he called Intek. In Fall of 2008, Mr. Heyl ordered 8 Intek infrared heaters for the new building. Once winter arrived, everyone was pleasantly surprised. "Only four heaters were required to heat the space even on the coldest days which got below zero", Bates said. Even with the 6500 cfm exhaust blower installed to remove welding smoke, the heaters keep up with the extra load just fine. When the large dock doors are opened for loading and unloading trucks, the heat recovers within a few minutes." Benefits of an Intek infrared zoned heating system include low operation cost and no drafts or noise associated with moving air. "An added benefit is the way it heats the machinery which then helps heat the surrounding work space."



Mounting Wall Brackets



Hanging Chain Assembly



JB Marine's Cost *(residential rates vary)*

Zonall Model 1248.480.6000
6.0 Kw (20,472 Btu equivalent)

\$.04 Cents per Kwh
(Ameren UE-Industrial)

\$.24 Cents per hour
(Full operation)

\$.12 Cents / hour
*Adjusted for
50% duty cycle*

\$

Estimated Cost of Operation:

*Costs may vary
due to local charges*

\$